

Start Up Instructions for INJP015 C Pump for Bayou Well Service

ADESCO.LLC
March 15th, 2011

Starting Instructions - **Extremely important**, if not followed, package **can and or will be damaged**.

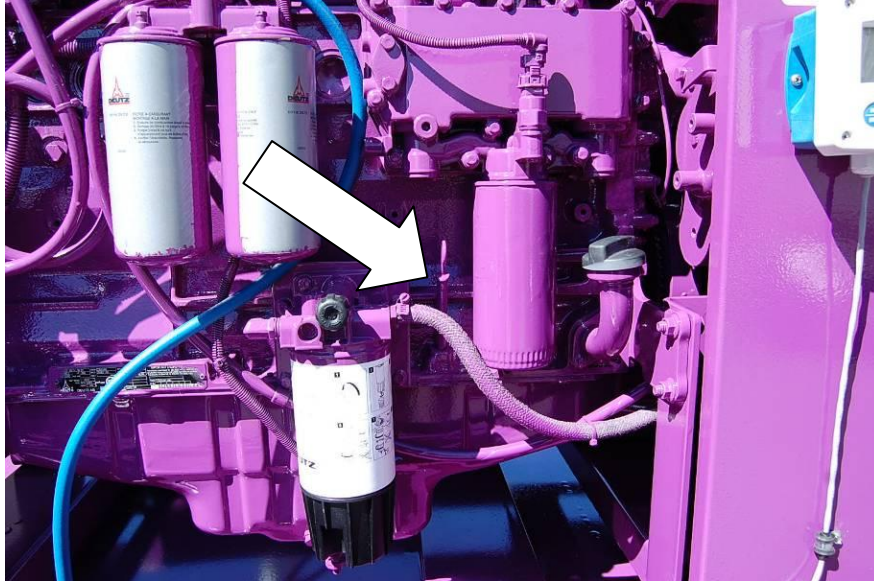


Perform walk around from the same place every time

Check fluids daily:

Engine oil, Coolant Level, Air Cleaner, Check Radiator for Obstructions, check for other damages or obstructions.

Check oil level. Use a diesel approved 15-40 engine oil. Check daily.



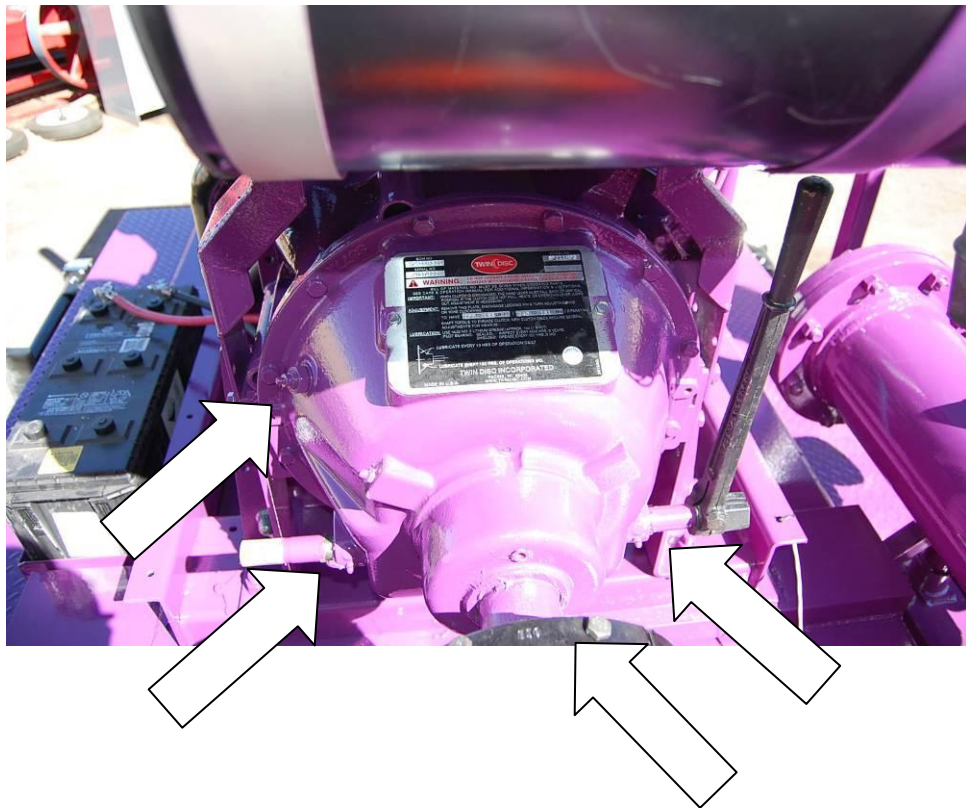
Check coolant level. Use a diesel approved coolant. Check daily and only when the unit is cold. **Severe burns can occur if checked hot.** This unit is equipped with a low coolant shutdown system.

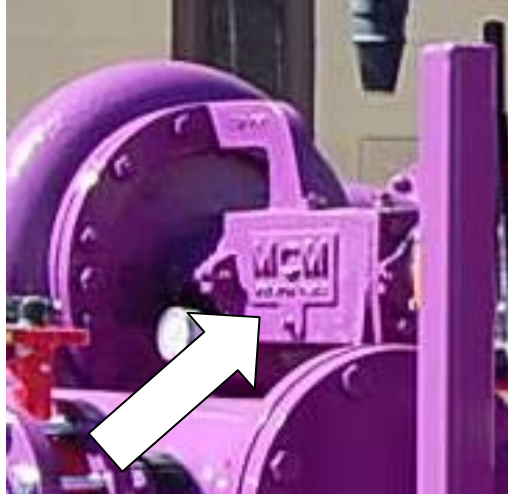


Check daily. Replace air filter when indicator is in the red.



Before starting unit grease the following PTO zerks monthly. **Do not over grease, one small injection of grease is all that is needed.**





Check pump oil level. Use a synthetic 5W-30W weight oil. Check when servicing engine. Add as needed.

Complete walk around and make appropriate corrections or adjustments.

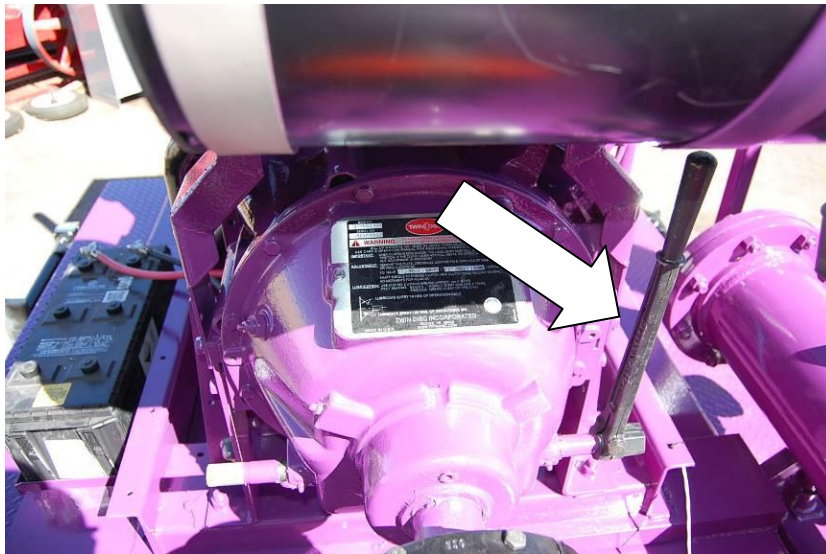
End walk around inspection for pre-startup.

Before Starting Unit.

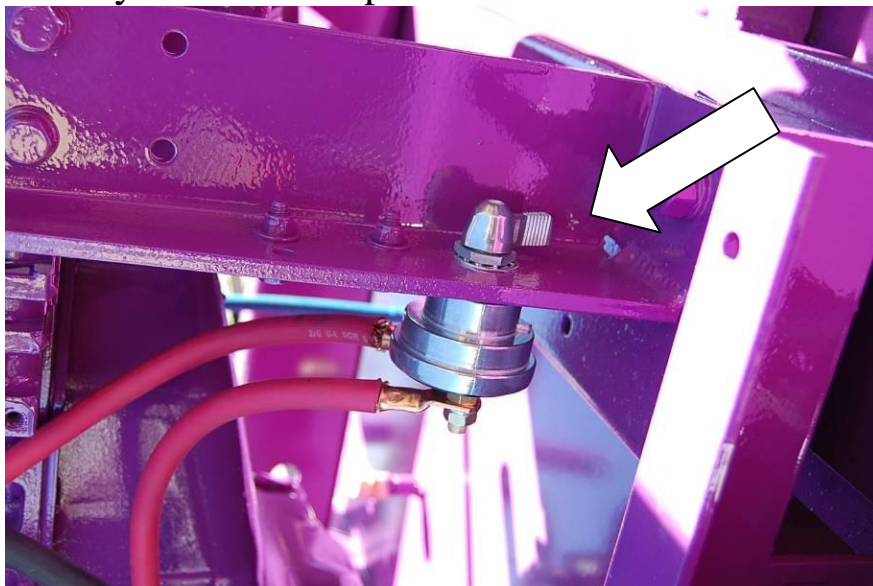
Only trained and experience personnel should operate this piece of machine. Starting Instructions - Extremely important, if not followed, package can and or will be damaged.

Before starting engine:

1. Perform walk around inspection per above guidelines
2. Ensure PTO is in the disengaged position. Lever not in the Vertical Position. PTO lever should be leaning towards the pump end of the package.



3. Ensure all valves are in the proper position:
4. Turn master key switch to on position.



5. Do one last inspection before starting engine.
6. Turn key to on position. Allow 30 seconds prior to starting to allow glow pugs to heat up. Start Engine. Allow 5 minutes for warm up.



While unit is warming up prepare pump for startup

End engine start up section

Preparing pump for start up

This package has been designed around a continuous duty cycle not exceeding 110 PSI. The desired speed for optimum running is based on site conditions.

Ensure package is installed per site conditions:

Open bleed valve and ensure all air is purged from the system. ***This is critical in that this pump is not designed to run dry for any length of time. Damage to mechanical seals will occur.***



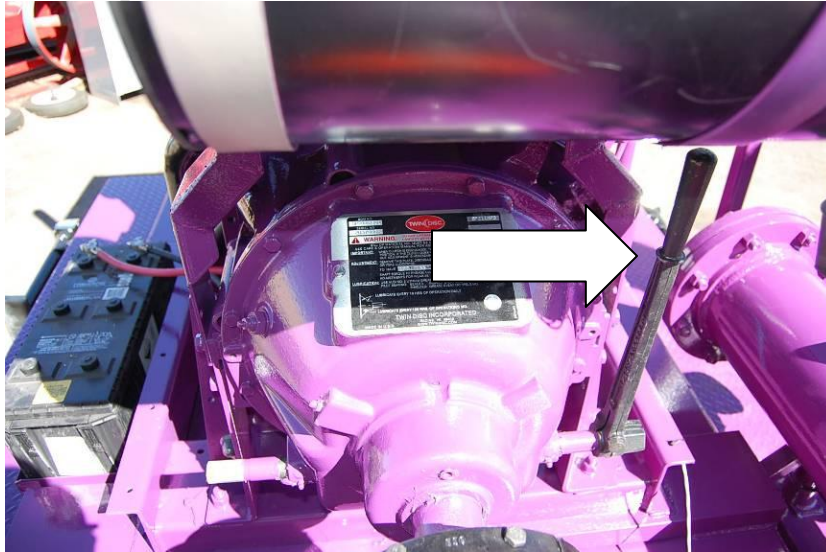
Introduce fluid to be pumped. Bleed off to prime pump. Once fluid begins to exit, close valve.

Ensure all suction valves and discharge valves are open.

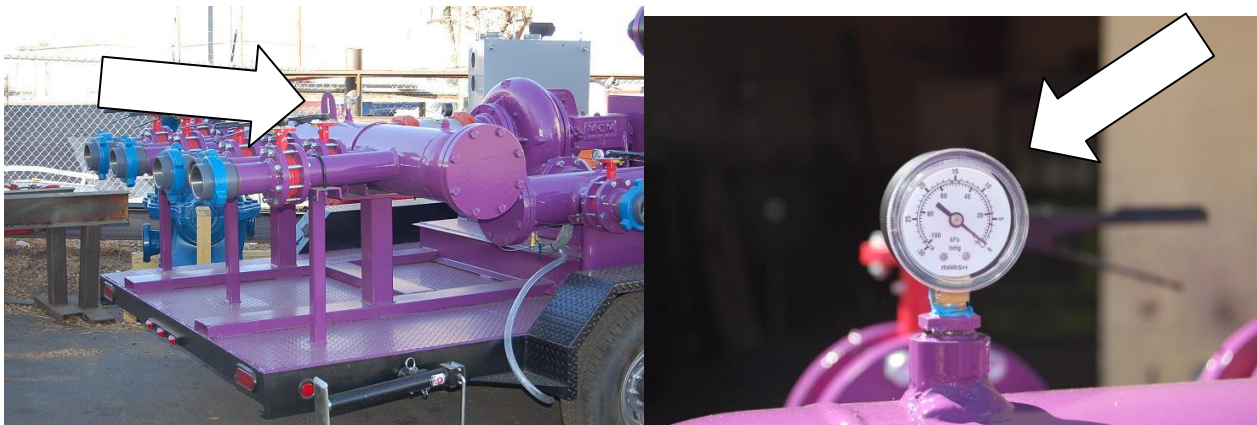


Prepare to pump fluid

Before engaging PTO ensure site is ready to receive water.
Engage PTO to vertical position.

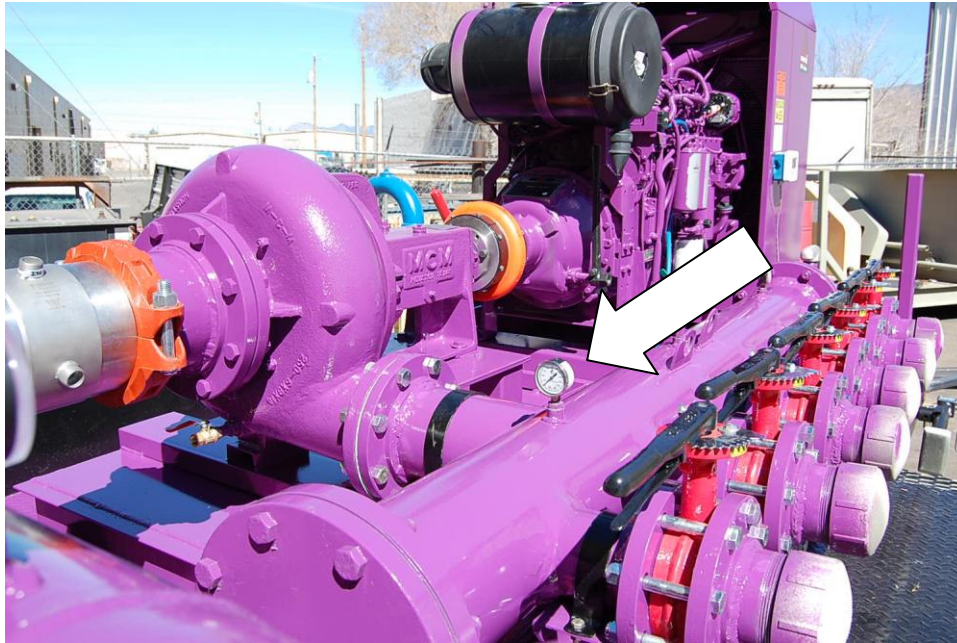


Speed engine up to desired rpm, while at all times watching the pressure gauge on the suction and discharge.



Suction Gauge should never exceed 5” or more, if suction vacuum is higher than 5” open more valves on the feeder tanks. One other caution to be aware of is call **“Water Hammer”** this is when the pump is pulling air and cavitations is present. This will damage the pump in a very short time. Slow pump down or determine why the pump is having this problem.

Pressure on the discharge side. Pump is rated for a maximum pressure of 110 PSI.



Once the pump is running speed up the engine while watching the pressure gauge during the entire process. **Never exceed site condition or pump capabilities.**

Shutdown procedures

Slow engine to an idle and disengage the PTO and allow the engine to cool down for at least 5 minutes. ***This allows the turbo to cool down.***

Turn engine off.

At this point shut the suction side valve or supply line valve.

Once unit has been decommissioned, turn off the battery disconnect and remove the starting keys.

End of startup instructions.

Customer is responsible for all damages to package due to lack of following the above instructions.

**Support and technical questions direct to:
ADESCO.LLC
1-505-918-5595**